

# KT8P0

## Circular Chart Recorder



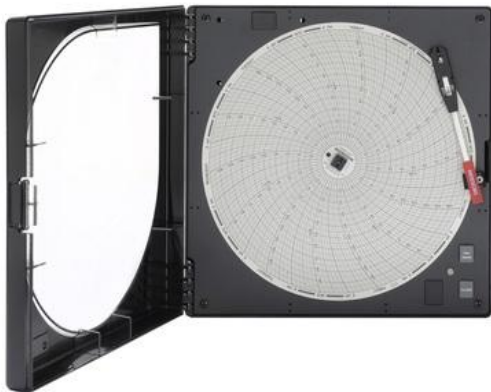
### FEATURES

- 8" Chart (203mm)
- Replaceable Sensor
- K-Thermocouple Probe
- Battery Operation
- User selectable recording times and temperature ranges
- For use above 500F (260C) A203 required

### ABOUT

8" (203mm) Temperature Chart Recorder

THE RELIABLE, VALUABLE, AND DEPENDABLE CHART RECORDER YOU'VE COME TO KNOW AND LOVE FROM DICKSON . . . NOW EQUIPPED WITH A REPLACEABLE SENSOR.



For more information, please refer to

**T:** +31 (0)174 287 160

**E:** [info@vrsupplies.com](mailto:info@vrsupplies.com)

**W:** [www.vrsupplies.com](http://www.vrsupplies.com)

**Circular Chart Recorder**

**Specifications**

- **Ambient Operating RH Conditions:** 0-95% RH non-condensing (Recorder Only)
- **Ambient Operating Temperature Conditions:** 32 to 122F (0 to 50C)
- **Approvals:** CE
- **Calibration Options:** N100, N300, N400
- **Channels:** CH1: Temperature
- **Chart Rotation Speed:** 24 Hour, 7 Day Dimensions: 3.1 x 9.2 x 9.2in
- **Enclosure:** Rugged Black ABS Case, Poly-carbonate Door, Aluminum Dial
- **IP Rating:** 20
- **Included Accessories:** Red Pen, Four AA Batteries, Quick Start Guide and 4' Bead-Wire Probe. \*Charts sold separately
- **Keypad Functions:** Power On/Off, Pen Home
- **Mounting Options:** Free Standing or Wall Mounted
- **Power Source:** Four AA Batteries (User Replaceable)
- **Power Status Indicator:** LED
- **Remote Sensor Length:** 4
- **Remote Sensor Type:** 1 K-Thermocouple Probe, Replaceable Sensor
- **Response Time:** 30 Seconds to 63% of Full Scale
- **Temperature Accuracy:** +/-1.8F from -22 to 122F 3.8F (+/-1C from -30 to 50C 2.1C)
- **Temperature Range:** -50 to 50F/C; -20 to 20F/C; 0 to 100F/C; 0 to 150F/C; 0 to 250F/C; 0 to 500F/C; 0 to 1000F/C; 0 to 2000F; 50 to 150F/C
- **Temperature Sensor:** Remote Probe
- **Unit Weight:** 9 lbs
- **Units/Pkg:** 1
- **Warranty:** 12-Month Limited

**Circular Chart Recorder**

**Accessories**



A868 - Sensor Dust Filter  
Prolong the life of your sensor



D611 - Shielded Immersion Probe  
15' (4.5m) Shielded  
Thermocouple with 4" (10cm)  
stainless steel tip



R400 -Replaceable Sensor  
Single K-TC Temperature  
Sensor



D617 - Probe Extension  
K-Thermocouple 10' (3m)  
Extension Cable



A062 - 10' AC Adapter Extension  
cable for R157 AC Adapter



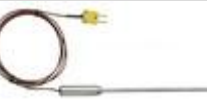
R180 – Replacement AC Adapter



R066 - Universal Plug Kit  
International kit for Data Loggers



R013 - Temperature Probe  
Replacement Bead Wire  
Temperature Probe



A203 - Temperature Probe  
6" (15cm) High Temperature  
Immersion Probe



A202 – Thermocouple Extension  
K-Thermocouple 100'(30m)  
Extension Cable



A340 - Glycol Bottle  
Bottle of Glycol Solution w/  
Septum Close



D605 - Piercing Probe  
4" (10cm) Thermocouple Handled  
Piercing Probe